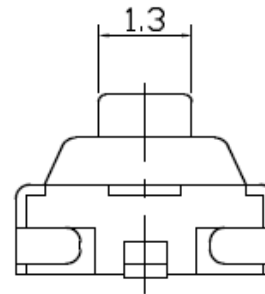
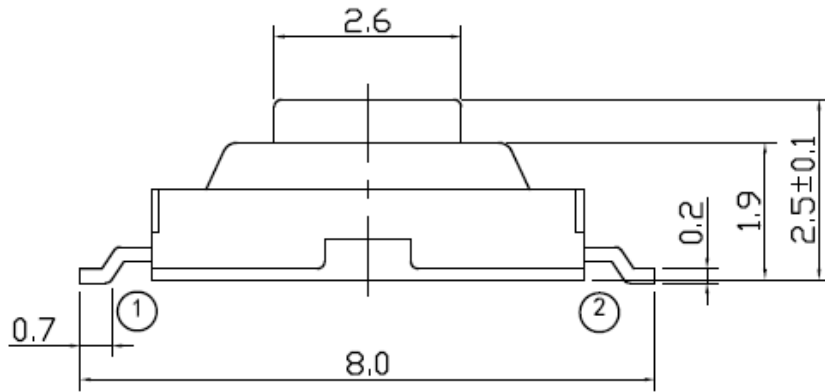
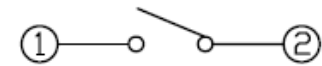


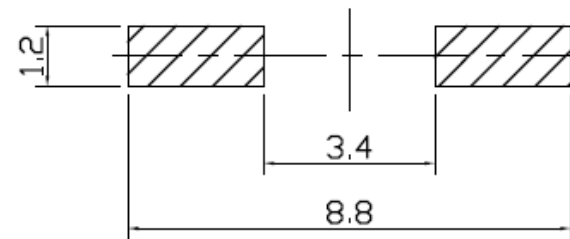
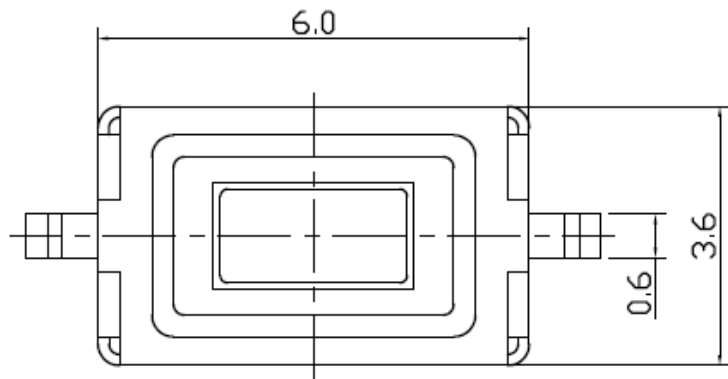
Dimensions



Circuit diagram



P.C.B Mounting Pattern Dimension



SPECIFICATIONS :

1. RATING : DC 12V, 50mA Max
2. OPERATING FORCE : 160±30gf(N)
250±50gf(R)
3. CONTACT RESISTANCE : 100mΩ Max
4. TRAVEL : 0.25±0.1 mm
5. LIFE : 160gf for 50,000
250gf for 30,000


 銓基電子股份有限公司
 ROKI ELECTRONICS CO., LTD.

PART NAME : TACT SWITCH

PART NO : TS08M-□□-PF SERIES

TOLERANCE : ±0.3 mm

SCALE :

UNIT : mm

VER : R03

